

INTERIORS WITH PERSONALITY

AN INTENSE WAY OF LIVING

ROOM BY ROOM, STYLE BY STYLE



BRABBU
DESIGN FORCES



AN INTENSE WAY OF LIVING



OTTER Single Sofa, OTTER Ottoman, CAUCA Rug, CYRUS Wall Light

LIVING ROOMS



The living room should be the soft spot where everyone feels most at home, when one can relax and unwind after a long day. On a daily basis, it may serve as a resting place, however, it is also where we receive our guests: meaning we have to make this room as welcoming to our family when they want to kick back but also as a place for our guests to relax. When furnishing a living room we look for something beautiful and comfortable, practical and livable. We need a sofa, a coffee table, a table lamp, or a chandelier, a chair or armchair; the placing of these products give shape to the room. Every living room should be the unique footprint of the family inhabiting the home.



The Living Room's purpose is to give us a spot to rest and gather with the people we love. Even if it does not have the shape or size we wish it had, we can create it as a place where the stories and memories of our lives will be sewn into the fabrics of the sofas and pillows.



HERA Armchair

Classic Style is perfect for those who love antiques, classic art pieces, symmetry and other design elements which are rich in history. The style prides itself on its harmony, order and its friendly charm. Timeless and aesthetic appeal, iconic, provokes a nostalgic feeling. This is exactly reflected with HERA Armchair (image above), BOURBON Sofa, MECCA Centre Table, NAICCA Suspension Light and Couple Rug by Rug'Society (image on the right).

HERA Armchair is fully upholstered in cotton velvet, inspired on the Temple of Hera, embodying the magnificence of this temple, elevating and transforming any living room set. BOURBON Sofa reflects the opulence of the French dynasty of the House Bourbon, known for its class and grandeur; this sofa is upholstered in cotton velvet and has a base in brushed aged brass, which perfectly matches the brushed brass matte base of MECCA Centre Table. To complete this Classic timeless look, NAICCA Suspension Light is a round suspension light which represents the legend of crystal origins. The aged brushed brass structure and the quartz crystal diffuser merge together to brighten any home decor, filling the room with a strong and peaceful atmosphere.



BOURBON Sofa, MECCA Centre Table, NAICCA Suspension Light, COUPLE Rug by RUG'SOCIETY

CLASSIC



DAKOTA Single Sofa, HELIOS Mirror, KOI Centre Table



NAMIB 2 Seat Sofa, GOROKA Side Table, HERON Rug by RUG'SOCIETY

Classical homes fuse bold furniture colours with neutral colours on the walls; hence the room's furniture, artwork and accent pieces pop, thus creating a warm and inviting space that also feels dignified. On the image on the left, the DAKOTA Single Sofa, HELIOS Mirror and MECCA Centre Table and NAMIB 2 Seat Sofa and GOROKA Side Table, are perfect examples of these pops of colour with a Classic style.

DAKOTA Single Sofa is fully upholstered with velvet and has a base in brushed aged brass which perfectly matches the gold leaf in the HELIOS Mirror – this mirror is inspired by the shining aureole every time the sun rises. This golden tone is completed by the MECCA

Centre Table, which features a brushed aged brass matte column that resembles the architectural heritage from the mosques. The NAMIB 2 Seat Sofa pays tribute to one of the oldest and largest deserts in the world; it is upholstered in satin cotton with legs in high gloss black lacquered wood. The GOROKA Side Table was inspired by the Goroka Bird, also known as Bird of Paradise, a bird known for their dazzling explosion of colour and feathers; this black side table harmonises perfectly with the black gloss legs of the NAMIB 2 Seat Sofa. This ambient gets complete with the Heron Rug by Rug'Society.

Following the Classic trend of products that pop, the SIKA 2 Seat Sofa is a distinctive item that has button detailing on the inner back; the nailhead trim and the brass details of the arms match with the brushed brass of the MECCA Side Table.

On the right, the SYRAD Wall Light sets the mood to drink on a glass of red wine while reading a book chosen from the LANKA Bookcase while sitting up in the KANSAS Armchair.



SIKA 2 Seat Sofa, KOI Side Table, YAGUA Rug



SYRAD Wall Light, LANKA Bookcase, KANSAS Armchair



TELLUS 2 Seat Sofa, NEPTUNO Rug by RUG'SOCIETY

Classic Style is perfect for those who love antiques, classic art pieces, symmetry and other design elements which are rich in history. Timeless and aesthetic appeal, iconic, provokes a nostalgic feeling. On the image above, the TELLUS 2 Seat Sofa is an iconic sofa that appeals to Tellus, the Goddess of the Earth in Roman Mythology. The twill fabric, nailhead trim and back legs in black lacquer matte mix perfectly with the Neptuno Rug by Rug'Society, evoking the nostalgic feeling of older times. On the right, AURUM Suspension III Light is made of matte hammered brass and got its name from the Latin word for gold. This golden light matches exactly with the MANUKA Centre Table matte brass structure and bronze glass tabletop, resembling a glorious beehive; this item will give the exquisite timeless twist to your living room.

The CAY Side Table is inspired by the rich history left by the flowing lava during a volcano eruption; with a bronze glass tabletop and a base in casted brass, this side table combines with the golden polished nailhead trim from the WALES Sofa. The WALES Sofa evokes the most impressive monuments of the Middle Ages – the castles; upholstered in cotton velvet and with a base in matte vintage brass, this sofa will give the sophisticated Classic look which will only be complete with the NAJ Armchair. The NAJ Armchair is fully upholstered in cotton velvet with nickeled nails which will certainly be an iconic chair for any Classic living room.



AURUM Suspension II Light, MANUKA Centre Table, CAY Side Table, WALES Sofa, NAJ Armchair

CLASSIC



LALLAN Centre Table, CAYO Armchair, WALES Sofa, MECCA Side Table, VELLUM Wall Light, AURUM Suspension III Light, YAGUA Rug, KOI Side Table, NAJ Armchair, KOI Console, PHONG Wall Light, HELIOS mirror, EQUATOR Globe Bar by BOCA DO LOBO



CLASSIC



IGUAZU Armchair, CAY Side Table, MACUSHI Rug



MAREE Sofa

The Classic Style, just like the name suggests, is in itself the definition of iconic. Its elegance and comfort remind us of art, of the antique and of symmetry. The aesthetic appeal of this movement is able to make you feel longing, even bringing up a nostalgic feeling. It is all about harmony, order and friendly charm. In interior design, neutral paint on the walls is the ideal canvas for this deco, since it can enhance the room's furniture, artwork and accent

items. MAREE Sofa, in the picture above, is the perfect example of a furniture item that pops; inspired by the Scottish Loch Maree, this sofa is upholstered in cotton velvet with matte lacquered legs. In the image on the left, IGUAZU Armchair and MACUSHI Rug bring harmony with its neutral colours in the blue ambience. CAY Side Table brings the golden touch with its casted brass structure and a tabletop in bronze glass.

CONTEMPORARY



JAVA Armchair, KENDO Floor Light, INCEPTION Rug by RUG'SOCIETY

Contemporary Style is really hard to define. Dating back to the 1970s, this style is unique because it borrows elements from many other movements and styles. In it, you can see inclinations to modern, traditional, art deco and even futuristic design. This futuristic design is present with KENDO Floor Light and CYPRESS Floor Light; their structure really has that futuristic twist we are used to seeing in movies. Both these ambiences and their grey neutral tones are also on those films. JAVA Armchair and INCEPTION Rug by Rug'Society bring each other out balancing with the structure and shaders in polished gold. On the right, SAYA Mirror casted brass details harmonise with the gold structure of CYPRES Floor Light, giving warmer tones to the monochromatic room filled with OREAS Armchair, WALES Sofa, TACCA Centre Table and AIR Rug by Rug'Society.



SAYA Mirror, OREAS Armchair, WALES Sofa, CYPRES Floor Light, TACCA Centre Table, AIR Rug by RUG'SOCIETY, DARIAN Sideboard by LUXXU

CONTEMPORARY

A contemporary design style of decoration is defined by simplicity, subtle sophistication, deliberate use of texture and clean lines. This can be seen in the simple sophistication on the MAA Armchair and HERA Armchair that will elevate your living room with textures from the BALTIC and HIMBA Rug. The LATZA Centre Table with its walnut root veneer harmonises with this same material from the HUANG Cabinet and its clean lines.



BALTIC Rug, LATZA Centre Table, MAA Armchair



HIMBA Rug, HERA Armchair, HUANG Cabinet, LALLAN II Centre Table

CONTEMPORARY



CYRUS Table Light, HUANG Sideboard, CLERK Armchair, KOTTA Rug by RUG'SOCIETY



CONTEMPORARY



DAKOTA Sofa, KUMI II Mirror, LALLAN Centre Table, TRIOLGY Rug by RUG'SOCIETY



LATZA Side Table, CALLA Table Light, EARTH 2 Seat Sofa, SAMI Rug

ECLECTIC



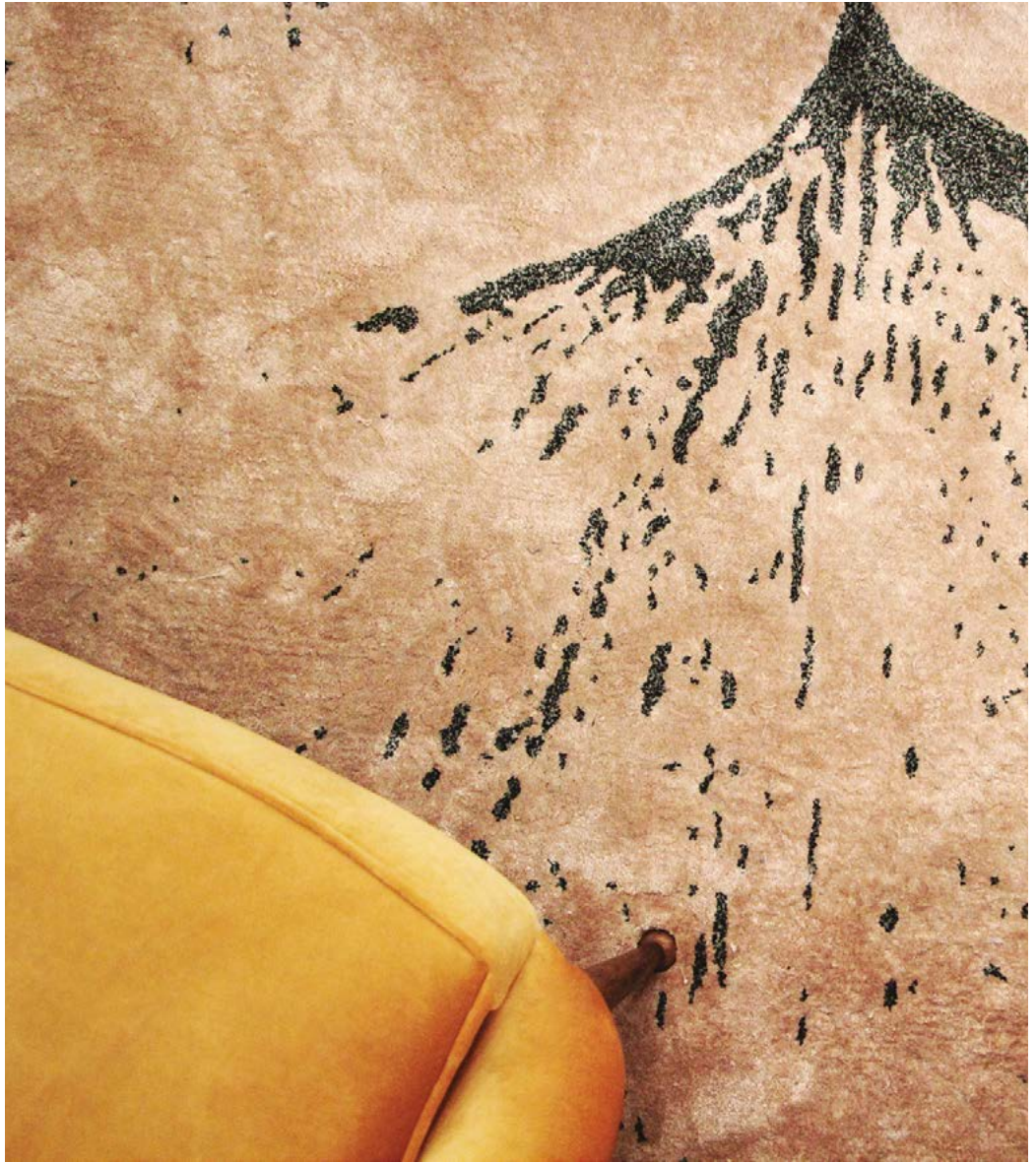
NAJ Armchair



NAJ Armchair, SAARI Sofa, EDEN Centre Table by BOCA DO LOBO, TURNER Floor Light by DelightFULL

Eclectic Style may seem unattained; however, eclectic spaces celebrate the harmonising of seemingly disparate styles, textures and colours. Eclectic Style is a mix of high and low, rugged and luxed, bold and quiet. NAJ Armchair in red and grey is the perfect example of the eccentricity of the Eclectic style. This living room chair is fully upholstered and mixes piping with nickerled nails.

SAARI sofa matches the reddish tones of NAJ armchair and has a base in brushed aged brass matte. This lounge sofa will bring comfort and elegance to any living room set. The look is complete with the EDEN Centre Table from Boca do Lobo and the Turner Floor Light by DelightFULL.



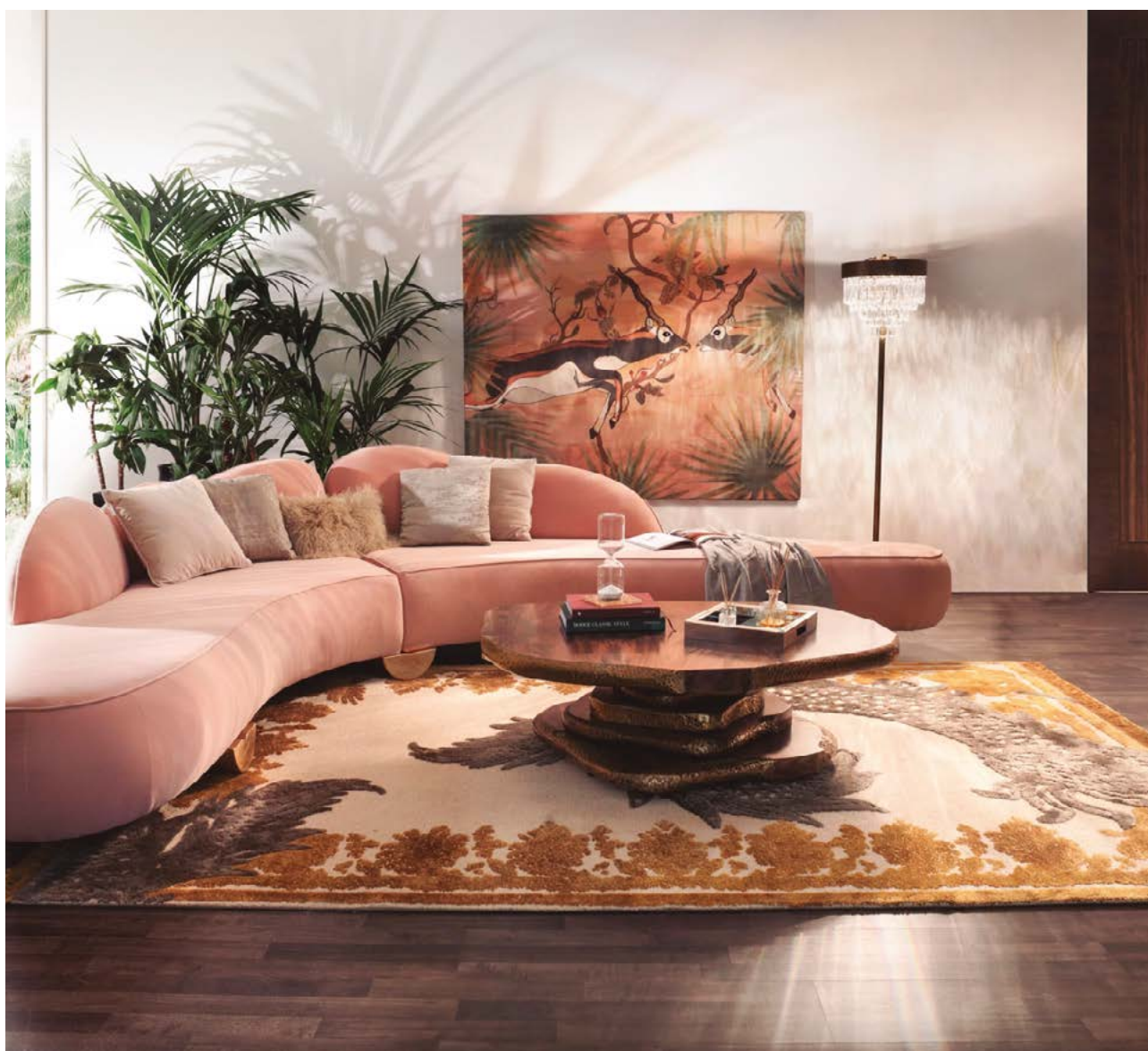
MALAY Armchair, MACUSHI Rug

Eclectic is a popular adjective in interior design parlance, meaning a decor that comprises heterogeneous elements — a mixture of textures, time periods, styles, trends, and colours. All these elements perfectly blended together, create the elevated harmonised look thus there is uniqueness in furnishings, which have an unexpected use of materials, patterns, shapes, textures and finishes that are usually handmade. These features can be seen on all the products on both these images. Starting with the MACUSHI Rug, it has a delicate flower pattern and sand hues colour that brings out the yellow of MALAY Armchair. This velvet upholstered chair has brushed aged brass legs, matching the brushed brass structure of the MECCA Side Table, which is finished with a Nero Marquina marble, table-top PEAOWL Pillow has a unique yellow pattern in velvet which fits well with the details in matte hammered brushed aged brass of the LATZA Centre Table, which has a top in walnut root veneer. PHONG Wall Light is gold plated with a shade of transparent acrylic, shining a light of elegance to the living room. BLOOM Wall Fire pushes forward this elegance with its steel body representing a fully bloomed flower. And to finish off the ambience, the NOAKI Stool has a seat in velvet and a base in glossy black lacquer, making it perfect to use as a table stool, footstool or living room stool.

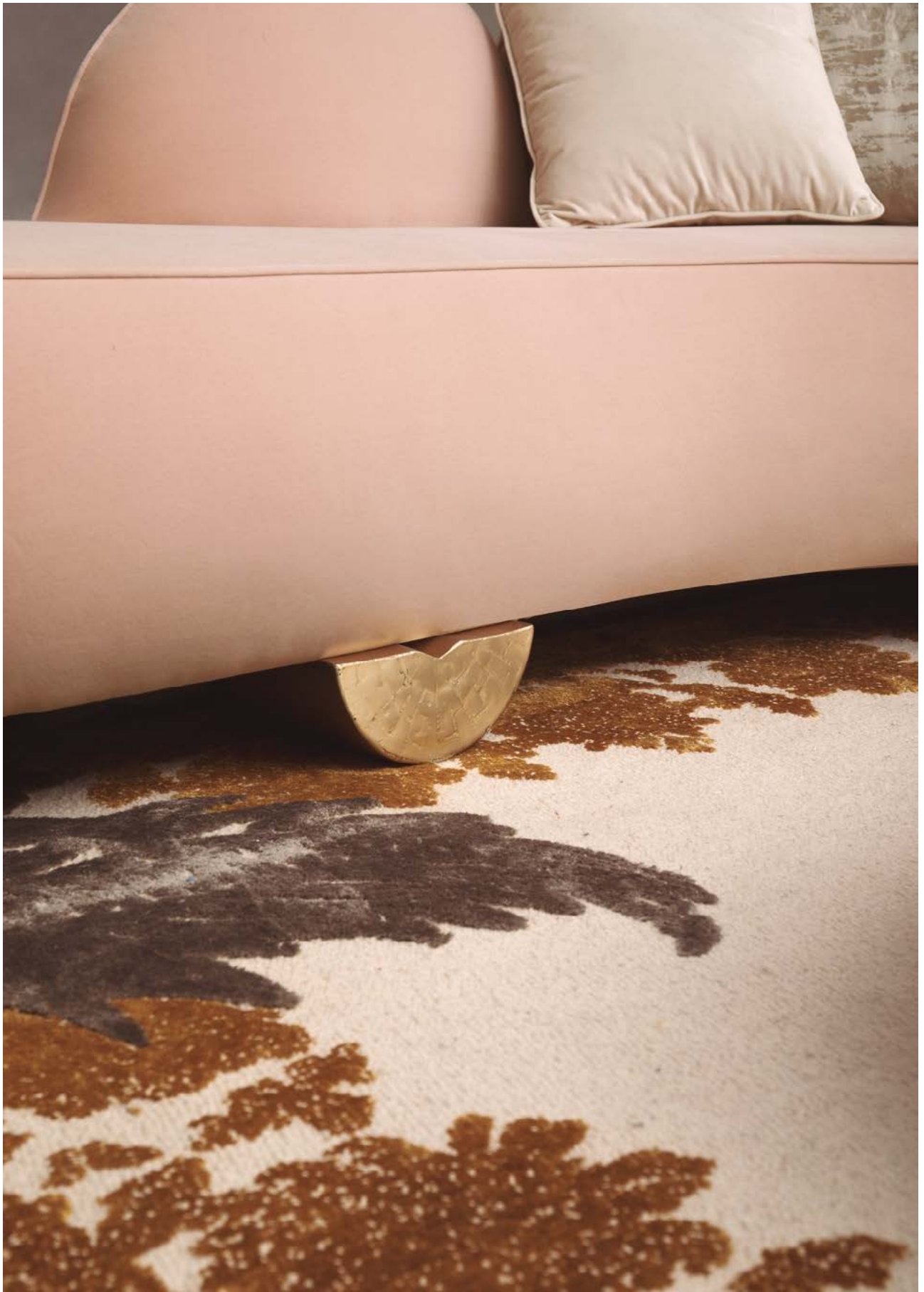


MECCA Side Table, MALAY Armchair, PEA FOWL Pillow, LATZA Centre Table, PHONG Wall Light, NOAKI Stool, BLOOM Wall Fire by FOOGO, NAICCA Suspension Light

The uniqueness in furnishings can also be seen on FITZROY Sofa. This curved sofa, with its back inspired on Mount Fitz Roy's shape, is fully upholstered in cotton velvet and the base is in matte casted brass. This goes exceptionally well with the aged brushed brass structure of the NAICCA Floor Light, which has a Quartz crystal diffuser that brightens any room. LATZA Centre Table has a top in walnut root veneer and details in matte hammered brushed aged brass whose colours go perfectly well with the REDLEH Rug by Rug'Society.



LATZA Center Table, FITZROY Sofa, NAICCA Floor Light, REDLEH Rug by RUG'SOCIETY



ECLECTIC



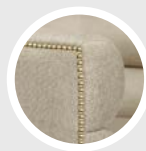
SIKA Armchair, NAU Sofa, SIKA 2 Seat Sofa, EMPIRE Centre Table and COLECCIONISTA Bookcase by BOCA DO LOBO, SINATRA Floor Light by DelightFULL, AGATHA Rug by RUG'SOCIETY



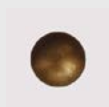


OREAS Single Sofa, GOLD Folding Screen by BOCA DO LOBO

HOW TO CUSTOMIZE OUR CHAIRS



NAILS OPTIONS



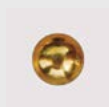
Aged Gold



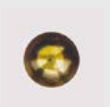
Black



Nicked



Golden
Polished



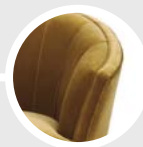
Bronze
Renaissance

01

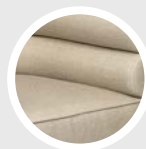


PIPING

You can apply piping instead of nails. The piping can be in the same fabric of the chair body or a different one. Use you own fabric/leather or choose from our fabrics collection.

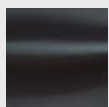


02

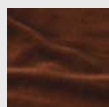


FABRICS OPTIONS

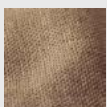
- More Than:
- + 50 Fabrics
 - + 500 Colours & Textures
 - 🔥 Fire Retardant Fabrics
 - 🧼 Anti Stain Fabrics
 - 💧 Water Resistant Fabrics



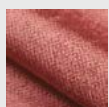
Synthetic
Leather



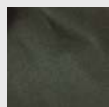
Velvet



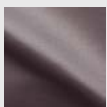
Twill



Linen/
Cotton



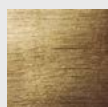
Synthetic
Suede



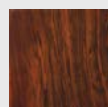
Satin

03

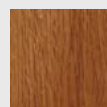
LEGS OPTIONS



Lefs



Solid
Wood



Wood
Venner



Lacquers



RAL Colours



04

MID-CENTURY





COMO Armchair

Mid-Century Style has organic influences, simple forms, emphasis on function, with simplicity and fine craftsmanship, peg legs and hardware. It uses flat plans and a strong connection to nature. This connection to nature can be found in COMO Armchair, which is inspired in the Italian Lake Como, and its idyllic scenery; this velvet lounge chair is fully upholstered in cotton velvet. The BOURBON Dining Chairs on the image in the left are great examples of the

customization options BRABBU has to offer. This dining chair embodies the opulence of the French dynasty House of Bourbon, which was the inspiration behind this chair, through its button-tufted inner back and legs in ash with walnut stain matte varnish and aged brass details. These chairs are complemented with LURAY Side Table - it features a structure in matte casted brass and tabletops in glossy palisander veneer and bronze glass.



MURSI Rug, OTTER Single Sofa, OTTER Ottoman, LANKA Bookcase



MURSI Rug, OTTER Single Sofa, OTTER Ottoman

MID-CENTURY



ESSEX Armchair, SEQUOIA Centre Table, CALLA Table Light, KUMI II Mirror, COLOSSEUM Console, HIMBA Rug



MAYA Armchair, LALLAN II Centre Table, NOAKI Stool, MAYA 2 Seat Sofa, LURAY Side Table, CYPRES Floor Light, SURMA Rug

The need for a better present in a post-war scene and a nostalgia for the future, created this new wave. The fusion of nature in the style, as well as its simplicity allied to a luxurious feel, makes Mid-Century Style one of the most iconic. Ideal for open floor plans, places with ample windows, able to bring the outdoors in. The image on the right shows this use of ample windows, shining natural light into MAYA Armchair. MAYA 2 Seat Sofa in green, brings out the brown of LURAY Side Table and LALLAN II Centre Table.

Together, with the structure of the CYPRES Floor Light, reminds us of trees. SURMA Rug and NOAKI Stool finish this simple ambience. The image on the left features the COLOSSEUM Console with the KUMI II Mirror on top. This mirror's hammered brushed aged brass matches perfectly with the CALLA Table Light. The SEQUOIA Centre Table brings in the tree motif, since Sequoia is one of the largest and tallest trees in the world that grows in California.

MID-CENTURY



PEARL Sofa, LALLAN Centre Table, MALAY armchair, KOI Side Table, AMIK Table Light, VELLUM Floor Light, YOHO Stool, KALINA Rug, VELLUM Wall Light



The colour palette ranges from bright hues in the 1950s to earthy colours in the 1960s; white and pale walls with bold and colourful pops create a high-end environment. This look is gained with CYRUS Floor Light, that fits the yellowish of green MAYA Armchair. This ambience receives its earthy colour from the CAUCA Rug and its geometric pattern. The golden look is continued on the image on the left with the NUKA's Armchair legs in glossy gold leaf, in a fully upholstered velvet curved back chair. It is also present in the KOI Folding Screen and its brass surface. In the centre of the wall is KYAN Console, with its straight and geometric lines composed by the oxidized corten iron pannels of its structure, with a bronze glass top. AMIK Table Lights brings cosiness to the ambience, with LALLAN Centre Table in the middle of this mid-century living room. MAYA 2 Seat Sofas, in light grey cotton velvet, complete the room.



KYAN Console, AMIK Table Light, LALLAN Centre Table, MAYA 2 Seat Sofa, IBIS Armchair, KOI Folding Screen, APACHE Table Light



CYRUS Floor Light, MAYA Armchair, CAUCA Rug

A mid-century modern interior scene featuring a red sofa, a large abstract painting, and a tall, metallic, sculptural lamp. The lamp has a complex, multi-faceted design with a central vertical element and a base composed of several stacked, angular blocks. The scene is set against a light-colored wall and a large window showing a view of greenery outside. The lighting is warm and directional, coming from the window, creating strong highlights and shadows.

MID-CENTURY

OREAS Sofa, SEQUOIA Side Table Big, SEQUOIA Side Table Small, CYRUS Table Light, ETNA Rug



SEQUOIA Centre Table, NAJ Armchair, ETNA Rug

Mid-Century style in particular has some distinguishing features, which consist of a classic, understated look, and clean lines with minimal fuss. Keep in mind, functionality is important as form follows function, space needs to be uncluttered and has sleek lines with both organic and geometric forms, has minimal ornamentation and an exploration of different, and sometimes contrasting materials. OREAS Sofa is a perfect example of clean lines with minimal fuss with it being fully upholstered in soft cotton velvet. The SEQUOIA Side Tables are functional forces of nature with its distinct walnut root veneer top and the base in casted brushed brass. CYRUS

Table Light completes this functional ambience having a gold plated brass, casting a soft golden glow when turned on. On the image above, the SEQUOIA Table demonstrates its versatility by having a Centre Table shape, showing the passage of years in its walnut root veneer top. These wooden tones are contrasted with the NAJ Armchair. This Armchair is fully upholstered in cotton velvet with nickeled nails. The fabric in this armchair can also be customised; it can be customised by changing fabric, nails and legs' finish.

MODERN



OTTER Sofa, OTTER Single Sofa, OTTER Ottoman, SHERWOOD Centre Table, KOBEN Suspension Light, BALTIC Rug





PEARL Sofa

Modern Style furnishings and decor celebrate natural materials, neutral or earthy colours, and the elimination of unnecessary detailing; there is an emphasis on horizontal and vertical lines, a celebration of natural light with unadorned windows, natural materials such as unpainted wood, metals, leather and natural fibres with a neutral, natural colour palette. Natural wood and wood veneers and reflective surfaces such as steel, chrome or glass are also present in this style.

Naturally, PEARL Sofa (image above) celebrates the neutral velvet colours with a base in brushed aged brass. The image on the right has the celebration of earthy colours and wood veneers with the LALLAN II Centre Table having a structure in palisander wood veneer, black lacquer, polished brass and brushed aged brass. These colours create the perfect match with the OKA Armchair, a fully upholstered cotton velvet chair. The AURUM Wall Light gives a pop of golden colour, and the ambience gets complete with the SURMA Rug.



LALLAN II Centre Table, OKA Armchair, AURUM Wall Light, SURMA Rug

MODERN



FITZROY Sofa, KOI Centre Table, CUZCO Rug



OTTER Single Sofa, MANUKA Centre Table, KUMI I Mirror, GOBI Rug



PADAUNG Stool, COMO Armchair

Modern Style products celebrate functionality with a colour palette favouring natural and neutral tones, giving a warm and inviting feel. Hence, when bold colours are used it gives a pop of colour, providing a focal point, which in turn helps to break the neutrals. This is quite evident in the OSLO Rug by RUG'SOCIETY that has a white base and splashes of natural colours, making the COMO Sofa and BRYCE Side Table pop. The COMO Sofa, just like the COMO Armchair, draws inspiration from the Lake Como, in Italy; it is a place known for its splendid scenery and breathtaking view. Both the sofa and the armchair are fully upholstered in velvet. The BRYCE Side Table takes its inspiration from the Bryce Amphitheatre, a natural giant rock formation which is a part of the Grand Canyon in Utah, USA - its distinctive structure is also present in this side table. The PADAUNG Stool is inspired by the Padaung women who wear neck rings as a symbol of beauty and protection, and just like them, this stool is a symbol of softness and strength.



BRYCE Side Table, COMO Sofa, OSLO Rug by RUG'SOCIETY

MODERN



OREAS Sofa, LALLAN Centre Table, MALAY Armchair, YOHO Stool, VELLUM Floor Light, KOI Side Table, VELLUM Wall Light, AMIK Table Light, MACUSHI Rug, MANDALA Blue Pillow, METROPOLIS Blue Pillow





AN INTENSE WAY OF LIVING



AN INTENSE WAY OF LIVING
WWW.BRABBU.COM INFO@BRABBU.COM